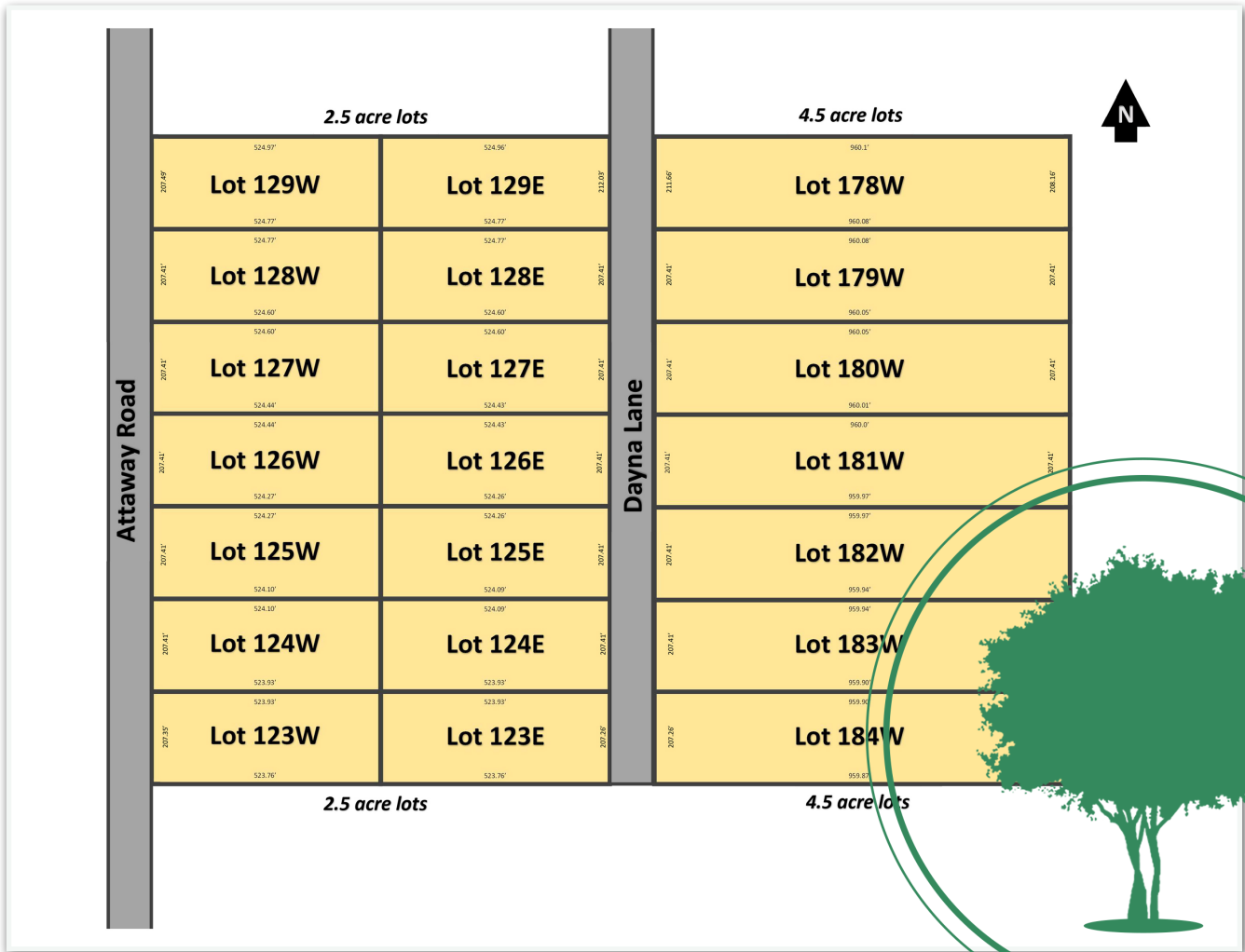


# Attaway Rd. Development

2.5 - 5 Acres Residential Tracts



- Wooded property on Sour Lake outskirts
- City water, sewer and electricity
- Zoned to Hardin Jefferson ISD
- Minimal deed restrictions to maintain the property's rural integrity



For more information:

Contact Rhett Cody

Office: 409.287.2700

Email: [info@yauponcorp.com](mailto:info@yauponcorp.com)